

MO39

BREAKFAST MEAL KIT

SHELF STABLE



Redesigned packaging
that fits in Cargo Pocket



<u>NAPA NUMBER</u>	<u>GTIN</u>	<u>SKU</u>	<u>DESCRIPTION</u>		<u>CASE PACK</u>		<u>CASES / PALLET</u>	
8940-01-E62-3178	00735108300393	MO39	BREAKFAST MEAL KIT		18		36	
<u>MEAL GROSS WT (OZ)</u>	<u>CASE NET WT (LBS)</u>	<u>CASE GROSS WT (LBS)</u>	<u>CASE CUBE</u>	<u>LENGTH (INCHES)</u>	<u>WIDTH (INCHES)</u>	<u>HEIGHT (INCHES)</u>	<u>TI</u>	<u>HI</u>
32	36	38	2.27	21.75	10.00	18.00	9	4

Nutrition Facts

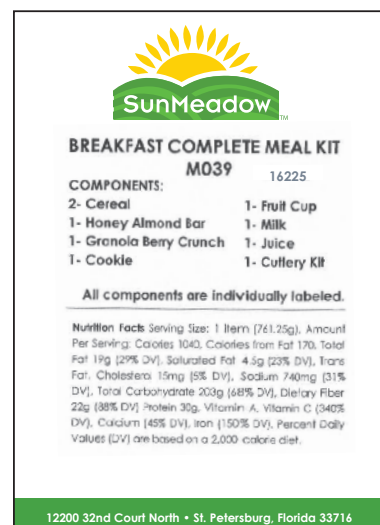
Nutrition Facts Serving Size: 1 item (749.8g), Servings Per Container: 1 Meal Kit, Amount Per Serving: Calories 1050, Calories from Fat 240, Total Fat 27g (42% DV), Saturated Fat 6g (30% DV), Trans Fat 0g, Cholesterol 0mg (0% DV), Sodium 1260mg (53% DV), Total Carbohydrate 179g (60% DV), Dietary Fiber 17g (68% DV), Sugars 55g, Protein 29g, Vitamin A (10% DV), Vitamin C (280% DV), Calcium (30% DV), Iron (45% DV). Percent Daily Values (DV) are based on a 2,000 calorie diet.



Packaging



Case Label



Kit Label

(800) 729-7214
www.SunMeadow.com



Made by GA FOODS, INC. • 12200 32nd Court North • St. Petersburg, Florida 33716

Military Sales • MilitarySales@SunMeadow.com • (800) 729-7214 • www.SunMeadow.com